

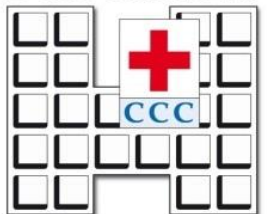
# **«Carcinoma Mammario BRCA-correlato Caratteristiche patologiche»**

Laura Bortesi

Anatomia Patologica

[laura.bortesi@sacrocuore.it](mailto:laura.bortesi@sacrocuore.it)

Sacro Cuore  
Don Calabria

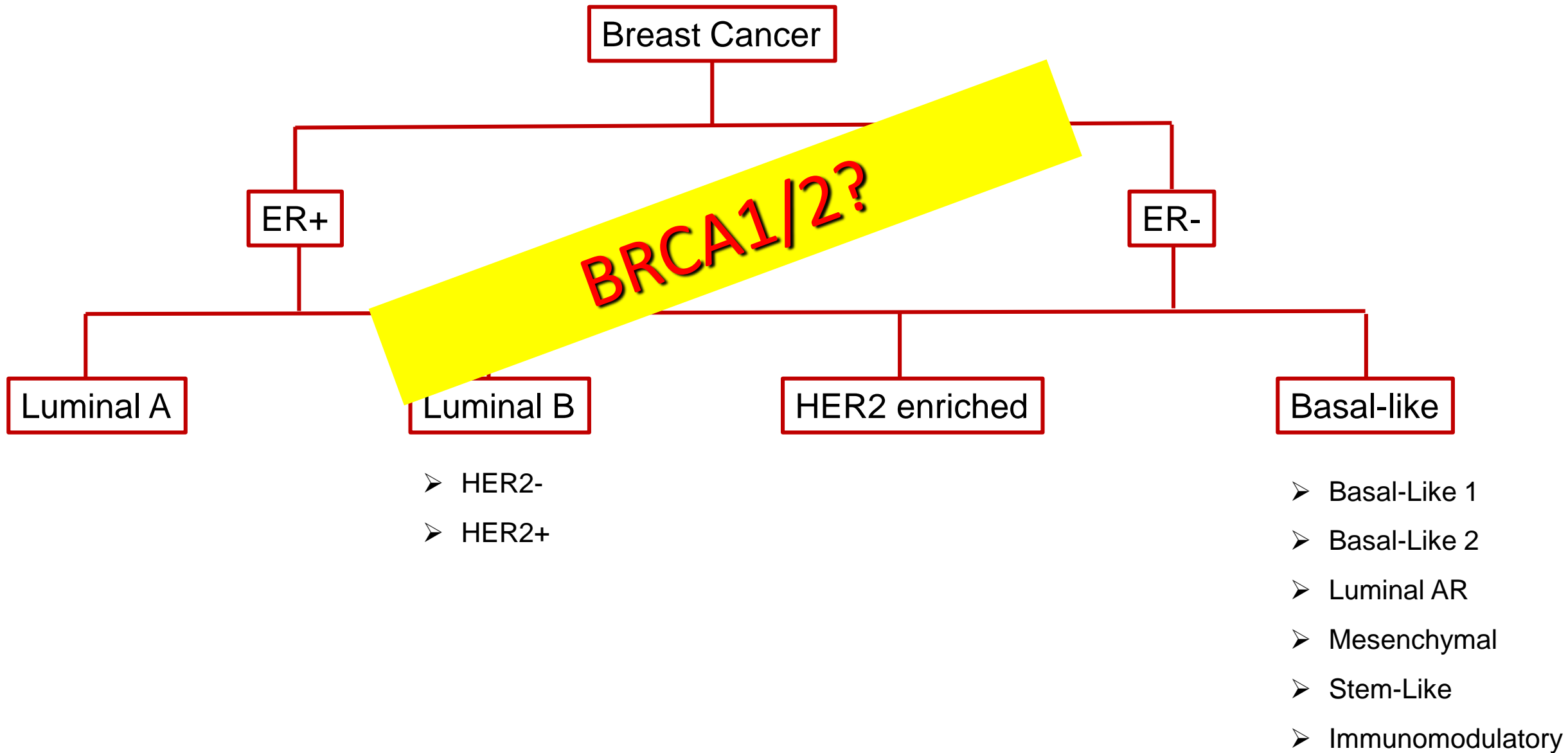


Cancer Care Center

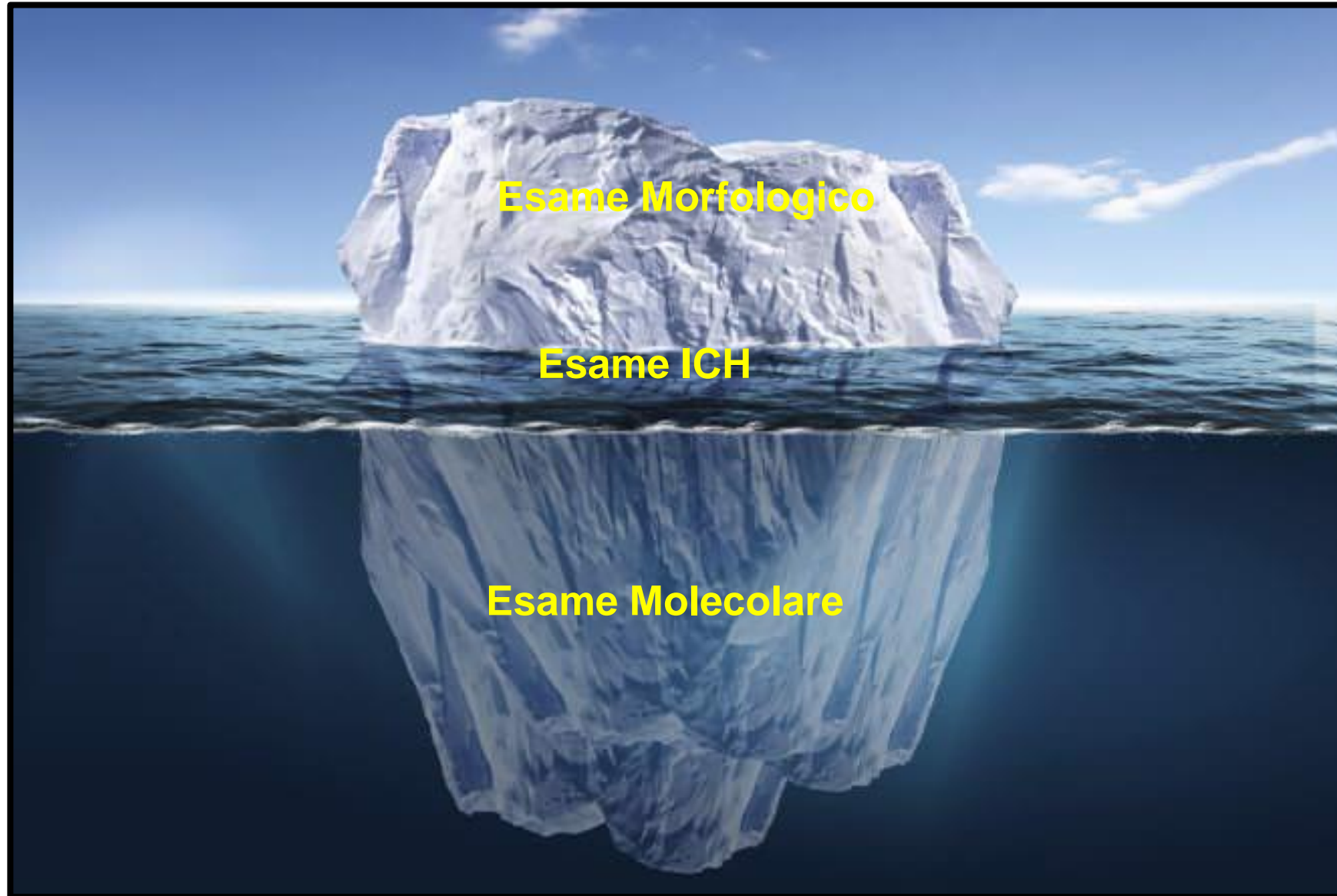
Negrar - Verona



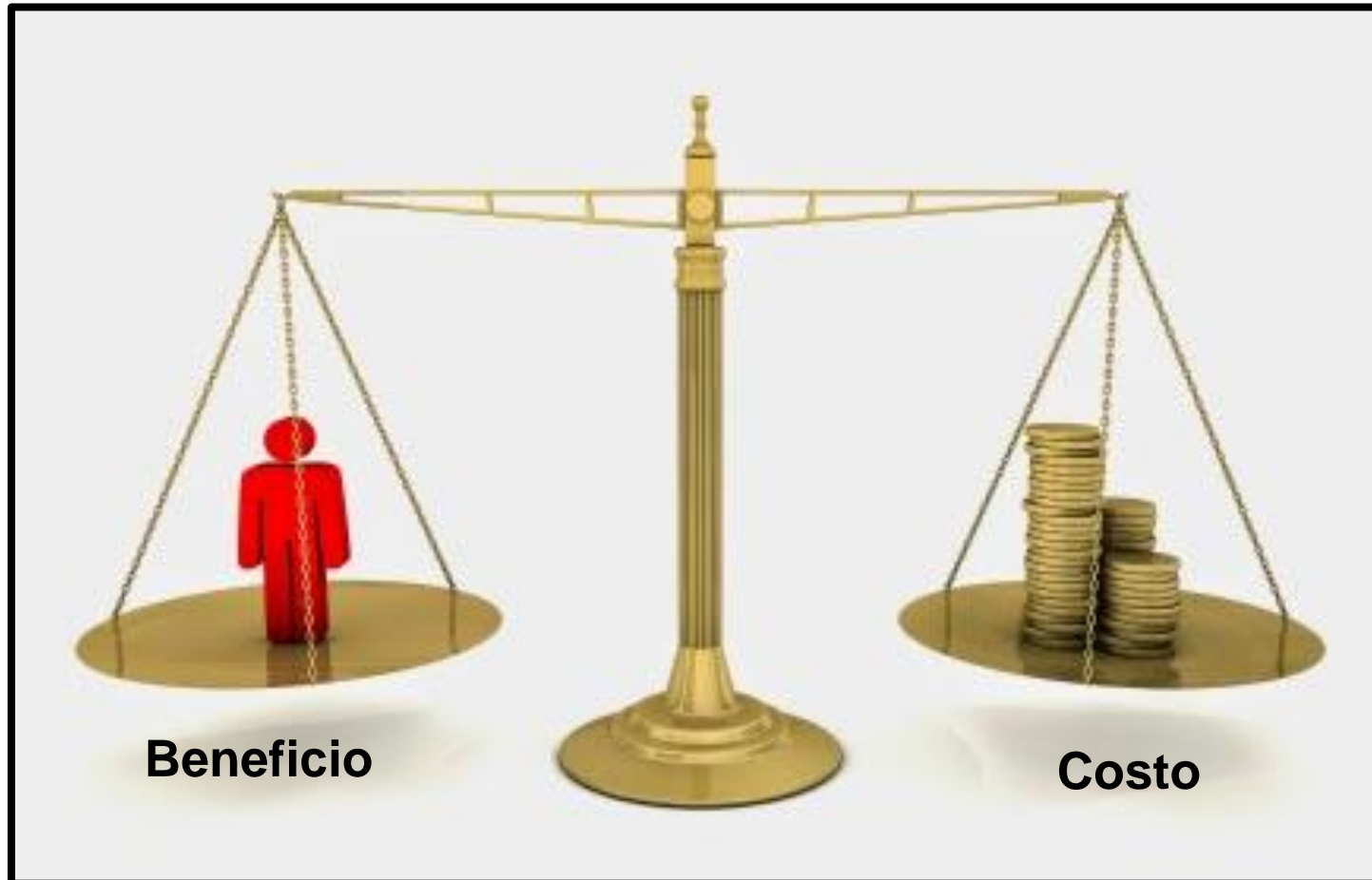
# Immunophenotyping / PseudoMolecular Classification



# Carcinomi BRCA Mutati



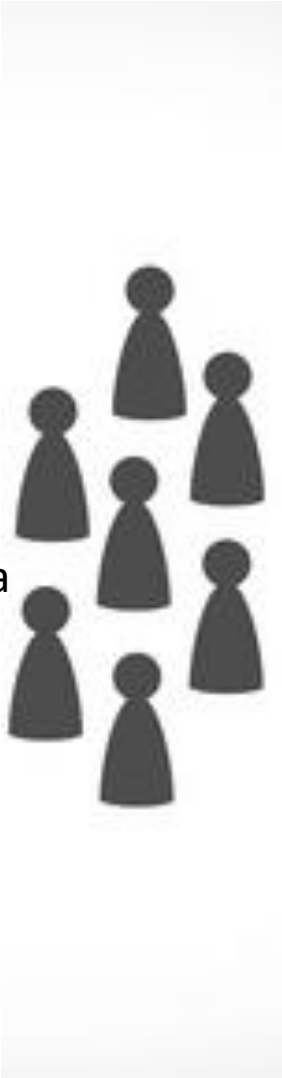
# Carcinomi BRCA Mutati



# Carcinomi BRCA Mutati



Diagnosi Patologica

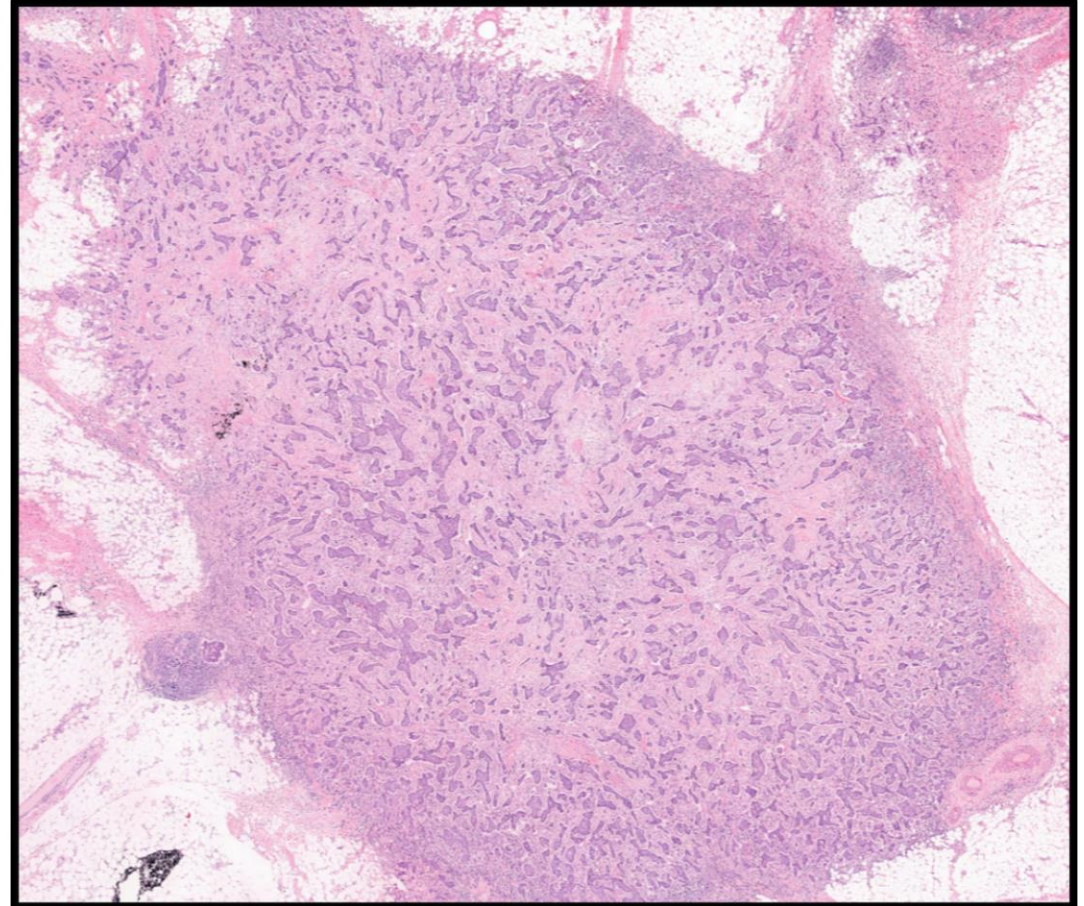


Anamnesi Familiare



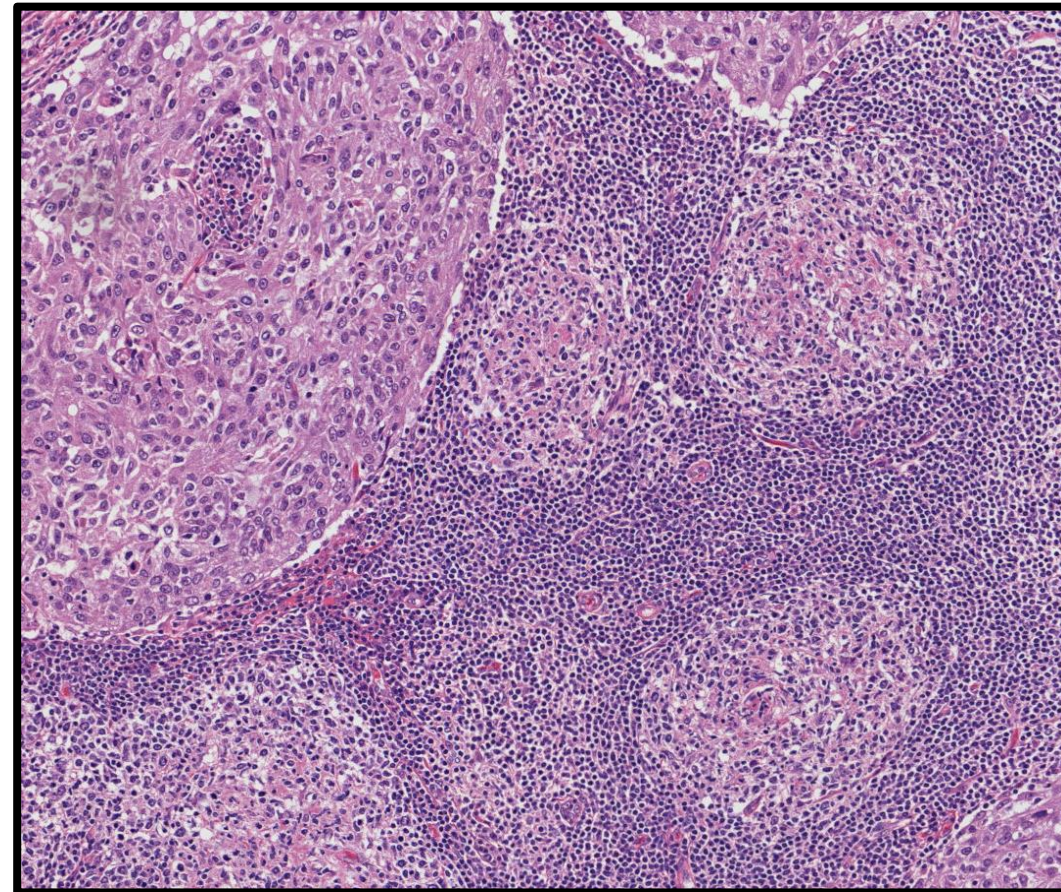
# Carcinomi BRCA1 Mutati

- Pattern espansivo



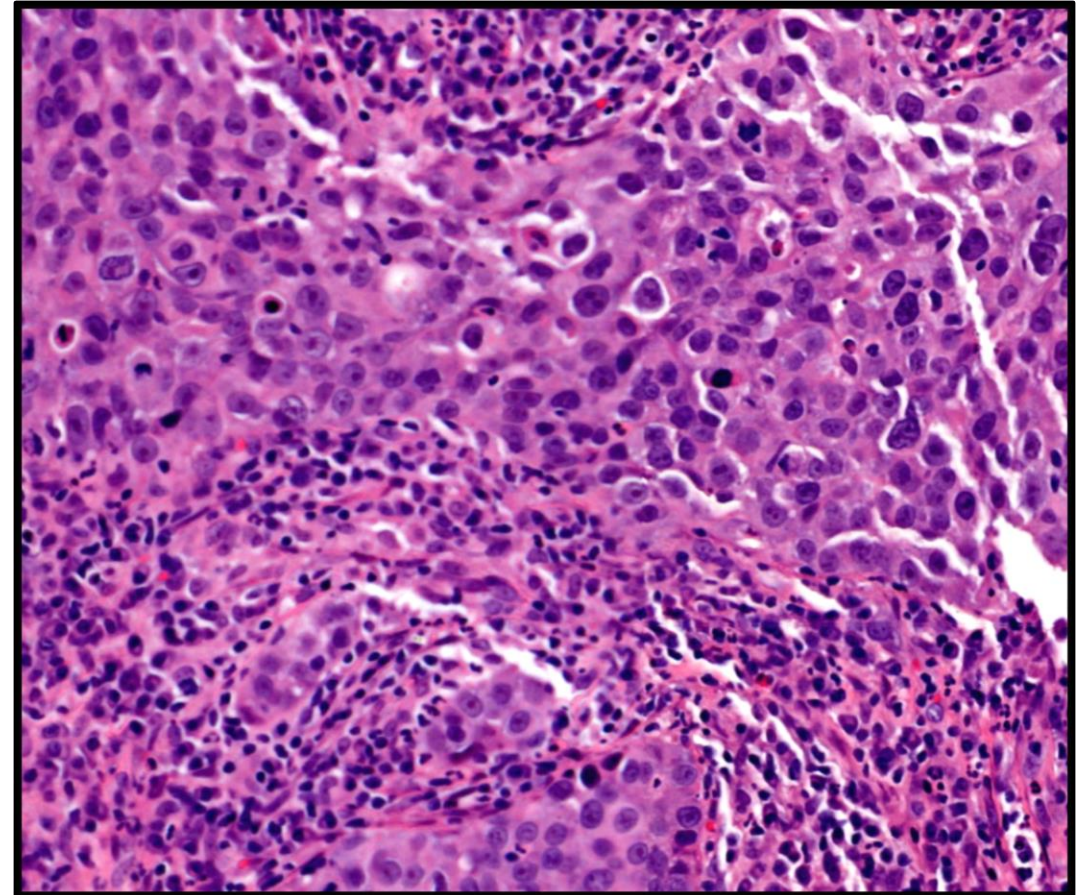
# Carcinomi BRCA1 Mutati

- Pattern espansivo
- Ricco stroma linfoide



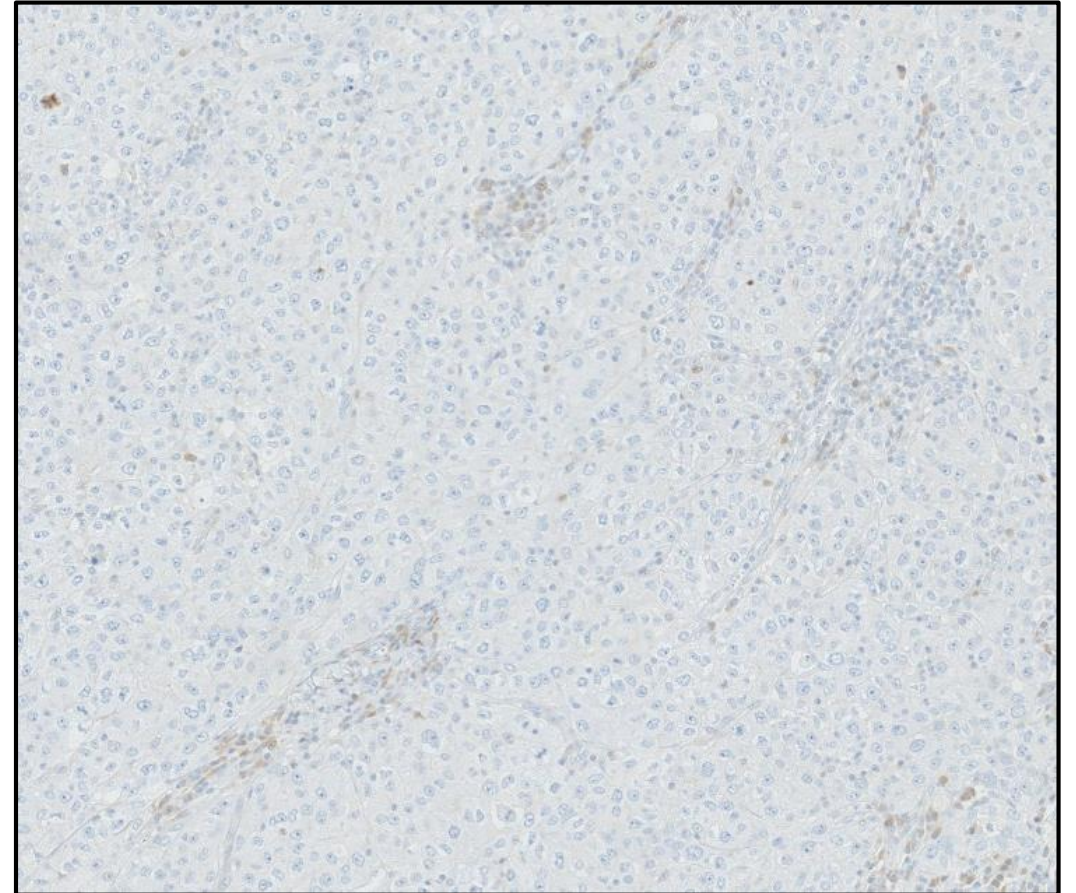
# Carcinomi BRCA1 Mutati

- Pattern espansivo
- Ricco stroma linfoide
- G3



# Carcinomi BRCA1 Mutati

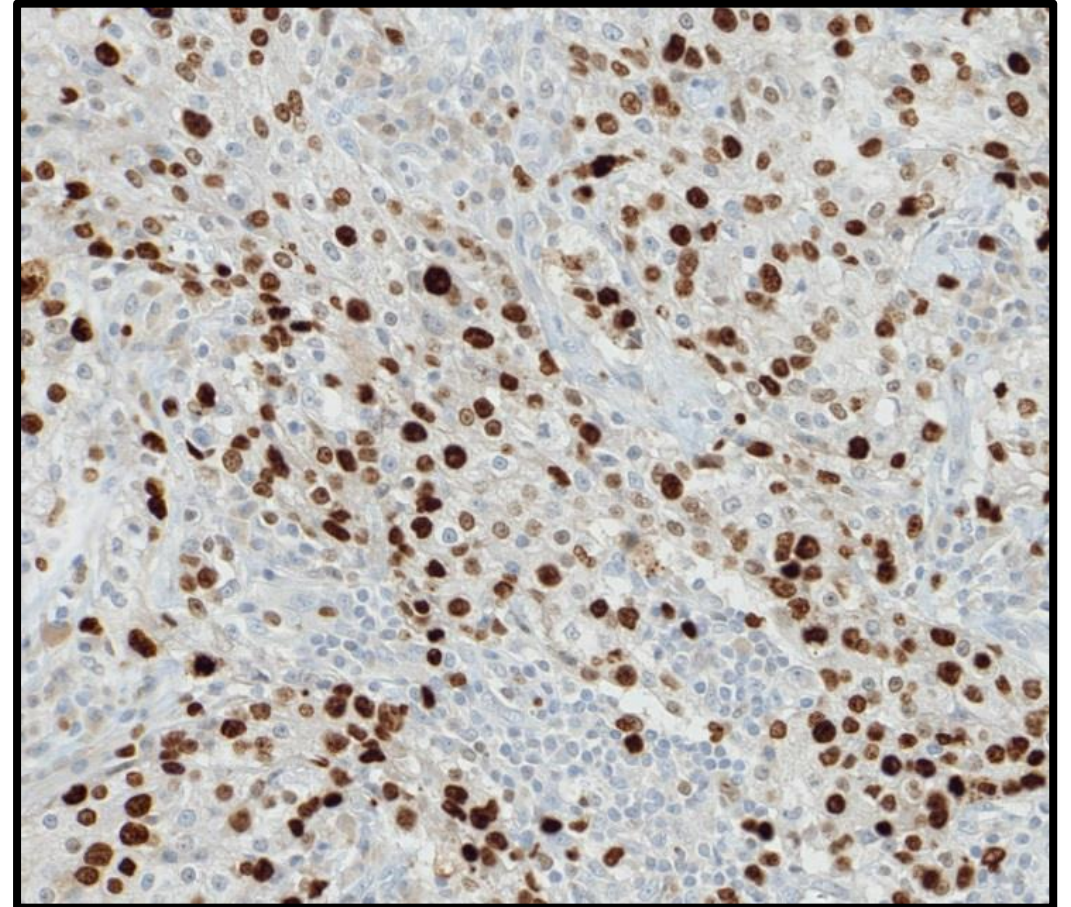
- Pattern espansivo
- Ricco stroma linfoide
- G3
- Triplo Negativi (70-80%)



**ER / HER2**

# Carcinomi BRCA1 Mutati

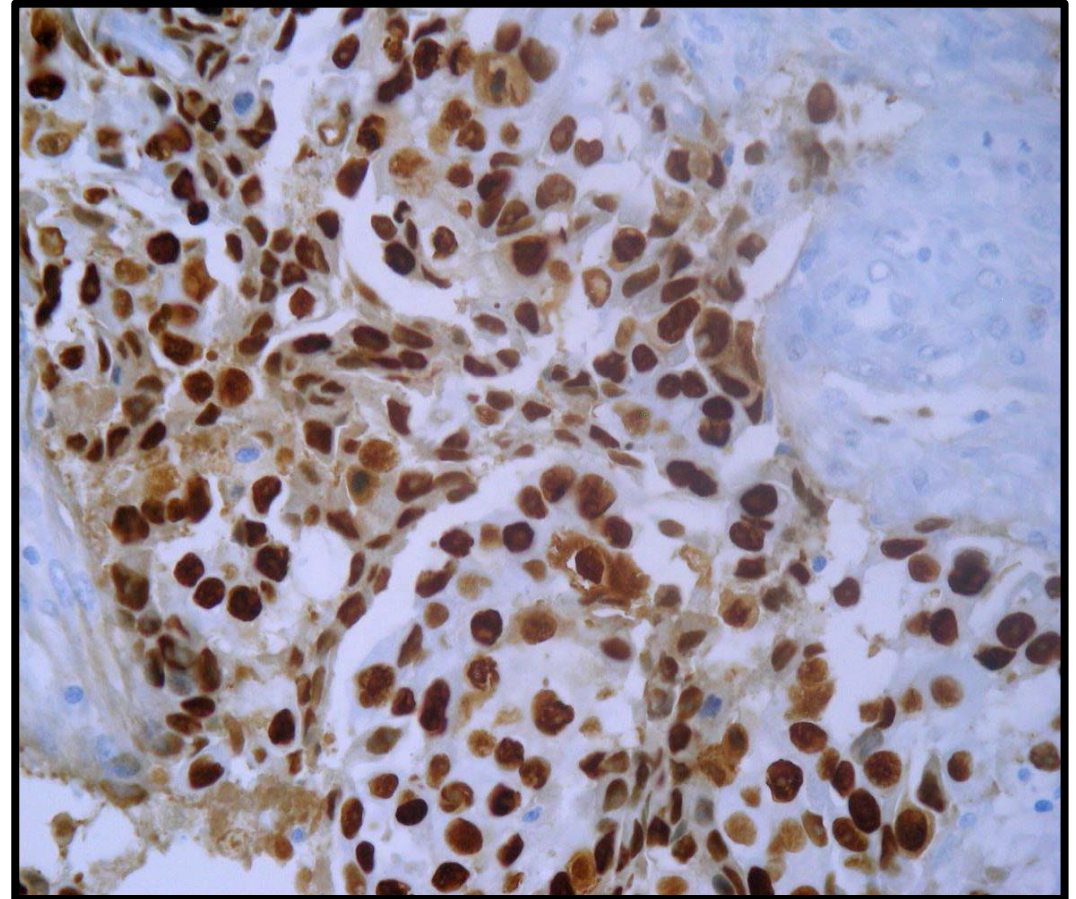
- Pattern espansivo
- Ricco stroma linfoide
- G3
- Triplo Negativi (70-80%)
- Alto Ki67



**Ki67**

# Carcinomi BRCA1 Mutati

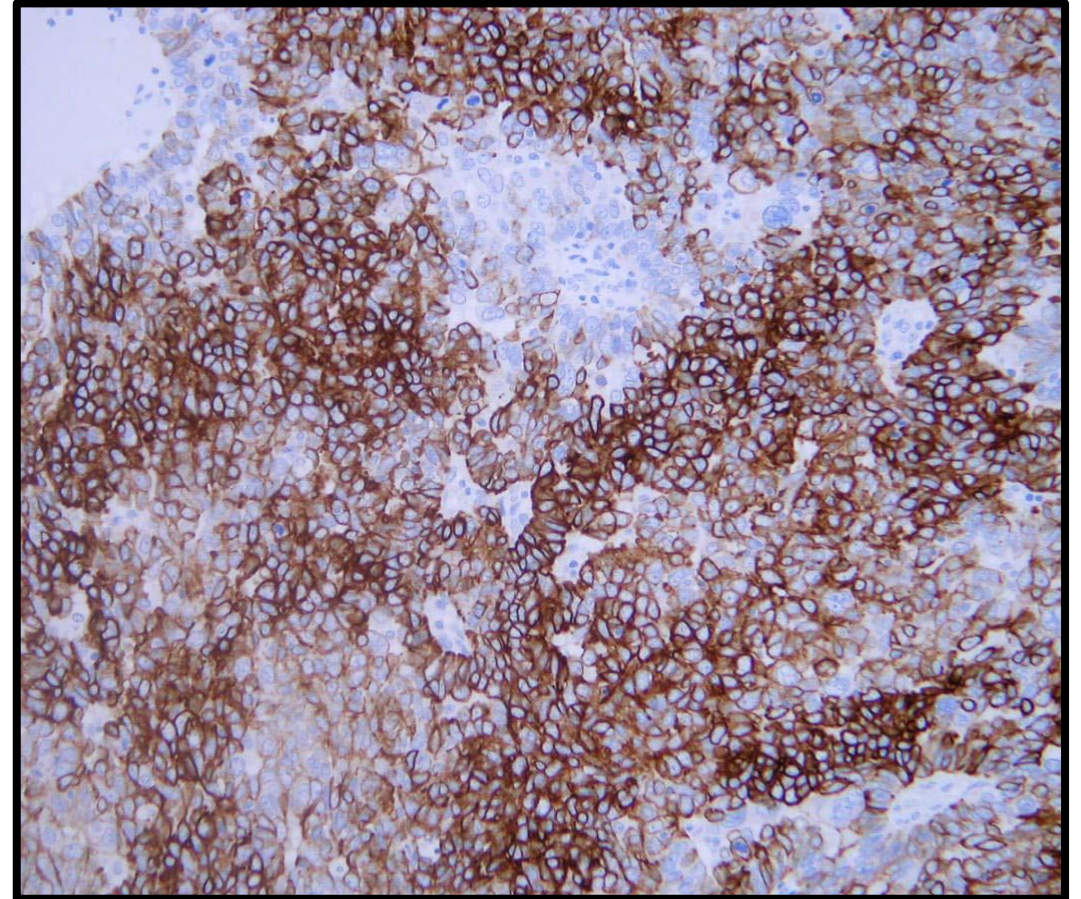
- Pattern espansivo
- Ricco stroma linfoide
- G3
- Triplo Negativi (70-80%)
- Alto Ki67
- P53: mutata (90%)



**P53**

# Carcinomi BRCA1 Mutati

- Pattern espansivo
- Ricco stroma linfoide
- G3
- Triplo Negativi (70-80%)
- Alto Ki67
- P53: mutata (90%)
- Fenotipo basale



**CK5**

# 2012 WHO Classification of Tumors of the Breast Epithelial tumors

## Invasive carcinoma of no special type (NST)

- Pleomorphic carcinoma
- Carcinoma with osteoclast like stromal giant cells
- Carcinoma with choriocarcinomatous features
- Carcinoma with melanotic features

## Invasive lobular carcinoma

- Classic lobular carcinoma
- Solid lobular carcinoma
- Alveolar lobular carcinoma
- Pleomorphic lobular carcinoma
- Tubulolobular carcinoma
- Mixed lobular carcinoma

## Tubular carcinoma

## Cribiform carcinoma

## Mucinous carcinoma

## Carcinoma with medullary features

- Medullary carcinoma
- Atypical medullary carcinoma
- Invasive carcinoma NST with medullary features

## Carcinoma with apocrine differentiation

## Carcinoma with signet ring differentiation

## Invasive micropapillary carcinoma

## Metaplastic carcinoma of no special type

- Low-grade adenosquamous carcinoma
- Fibromatosis like metaplastic carcinoma
- Squamous cells carcinoma
- Spindle cell carcinoma
- Metaplastic carcinoma with mesenchymal differentiation
  - Chondroid differentiation
  - Osseous differentiation
  - Other types of mesenchymal differentiation

## Mixed metaplastic carcinoma

## Myoepithelial carcinoma

## Rare types

### Carcinoma with neuroendocrine features

- Neuroendocrine tumor, well differentiated
- Neuroendocrine carcinoma, poorly differentiated (small cell carcinoma)
- Carcinoma with neuroendocrine differentiation

### Secretory carcinoma

### Invasive papillary carcinoma

### Acinic cell carcinoma

### Mucoepidermoid carcinoma

### Polymorphous carcinoma

### Oncocytic carcinoma

### Lipid rich carcinoma

### Glycogen rich clear cell carcinoma

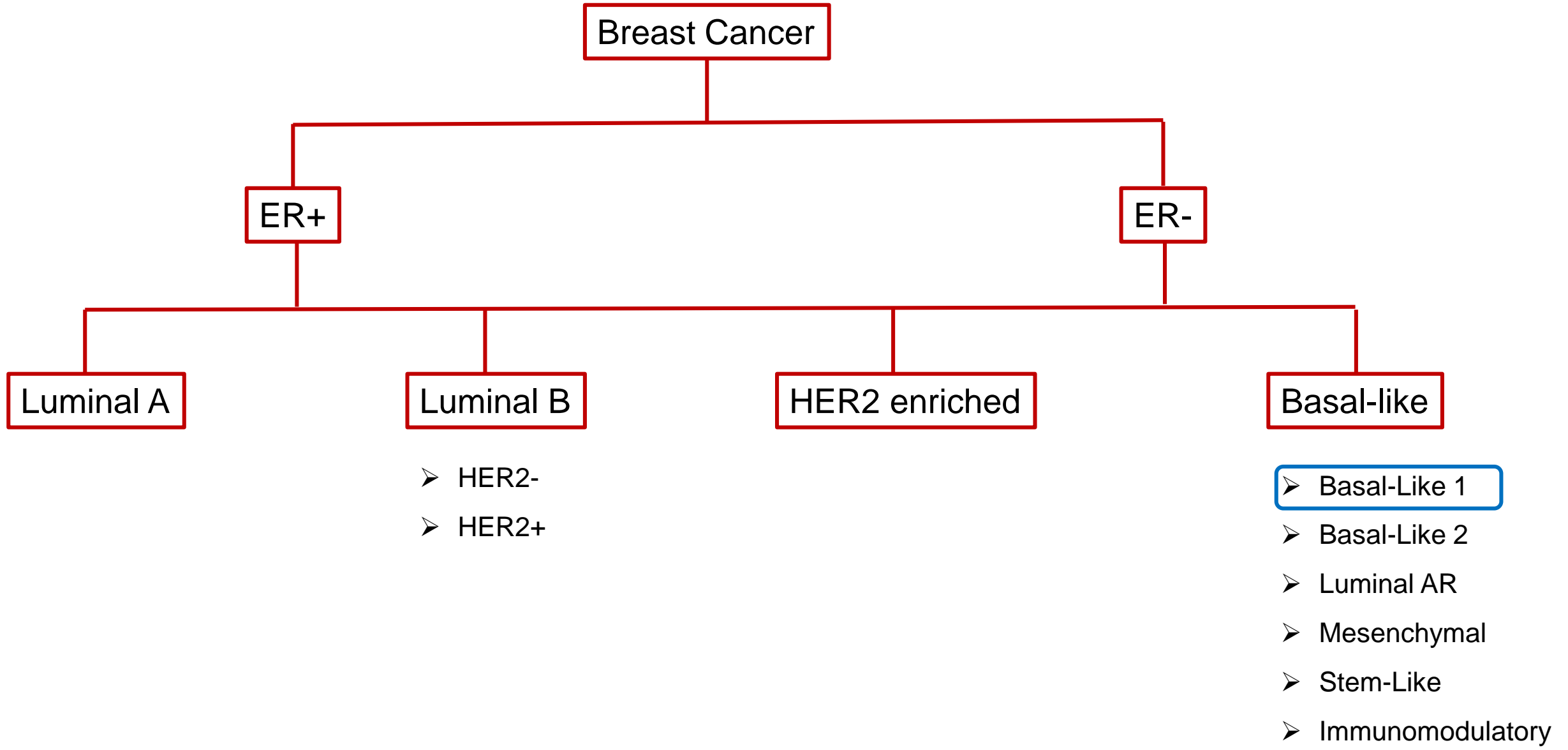
### Sebaceous carcinoma

### Salivary gland / skin adnexal type tumors

#### Cylindroma

#### Clear cell hidradenoma

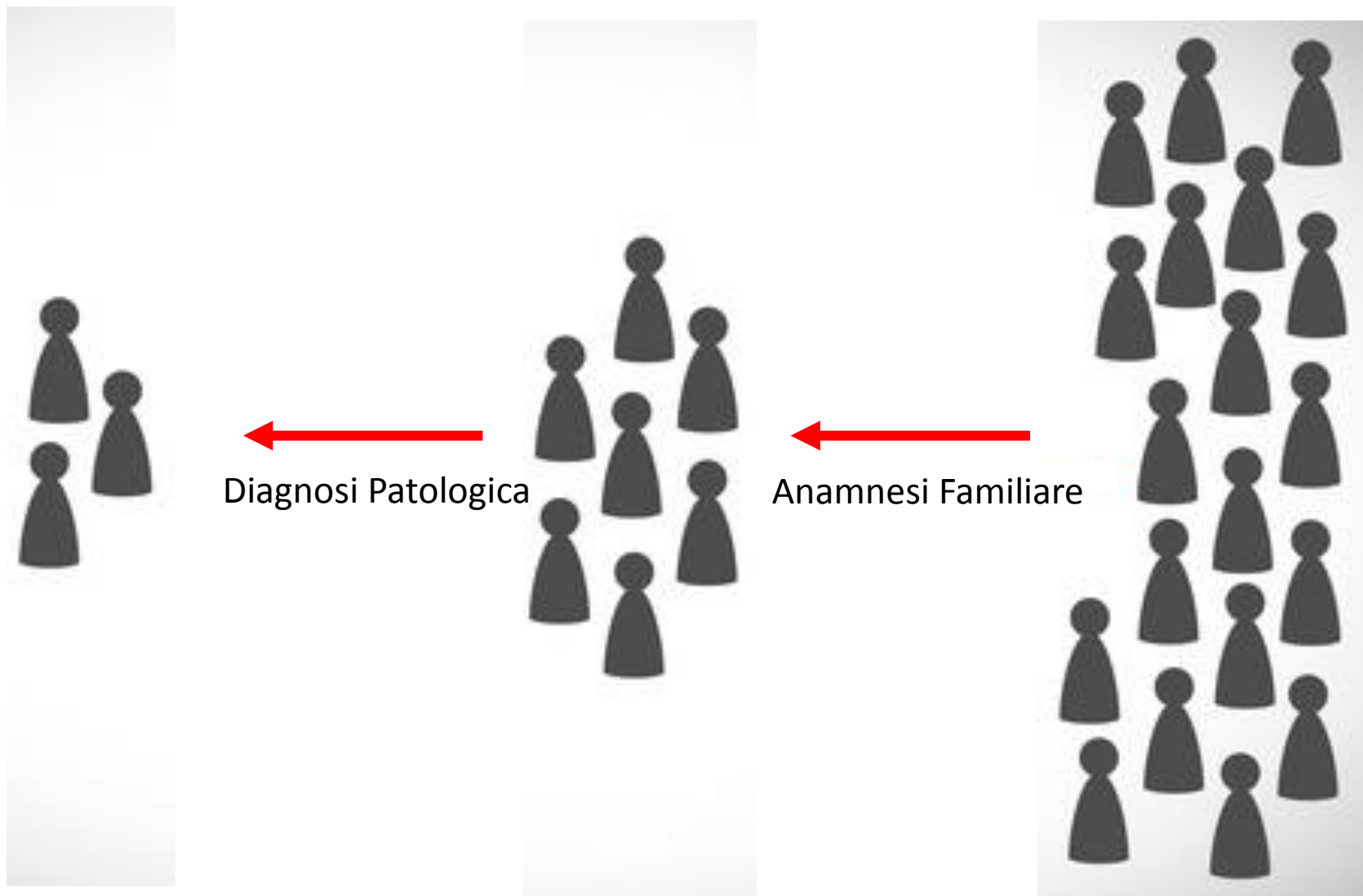
# Immunophenotyping / PseudoMolecular Classification



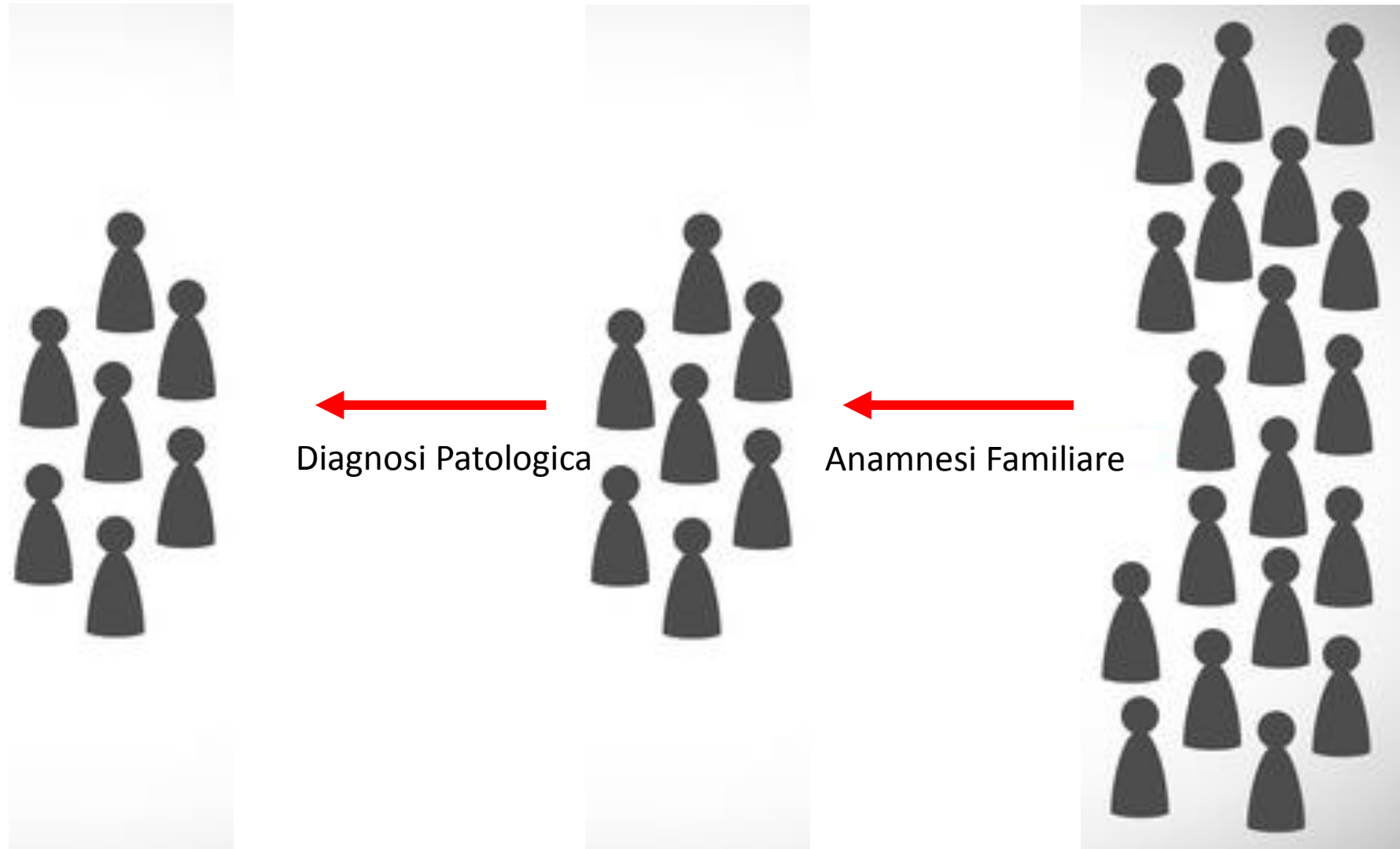
# Carcinomi BRCA2 Mutati

	<b>BRCA1 MUTATI</b>	<b>BRCA2 MUTATI</b>
<b>ISTOTIPO</b>	Midollare / NST	Variabile (anche lobulare)
<b>ER / HER2</b>	Triplo Negativi	Luminal A / B
<b>FENOTIPO BASALE</b>	Si	No
<b>P53</b>	Mutata	WT

# Carcinomi BRCA1 Mutati

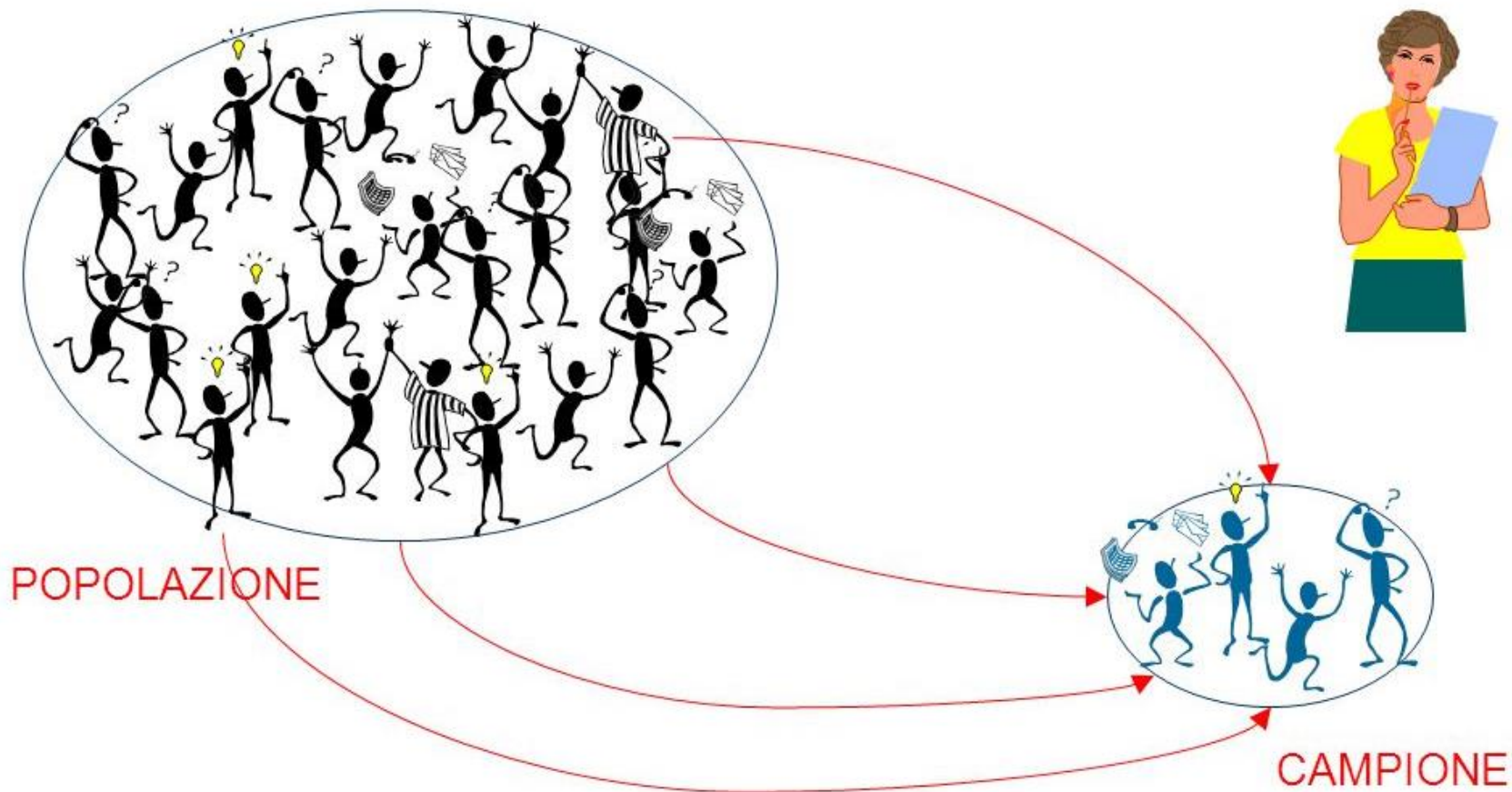


# Carcinomi BRCA2 Mutati



# Carcinomi BRCA Mutati

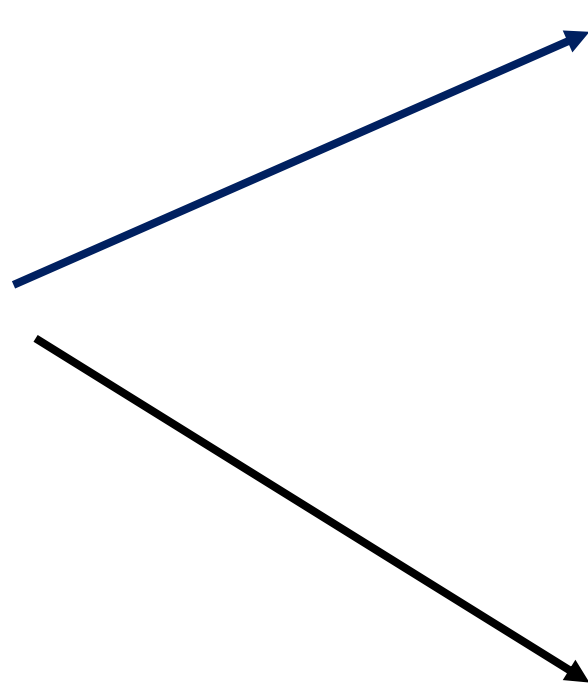
## Inferenza Statistica



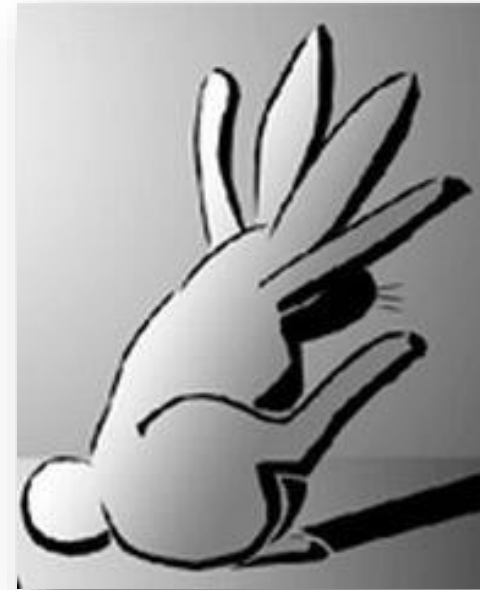
# Carcinomi BRCA Mutati



Diagnosi Patologica



BRCA1



BRCA2

